



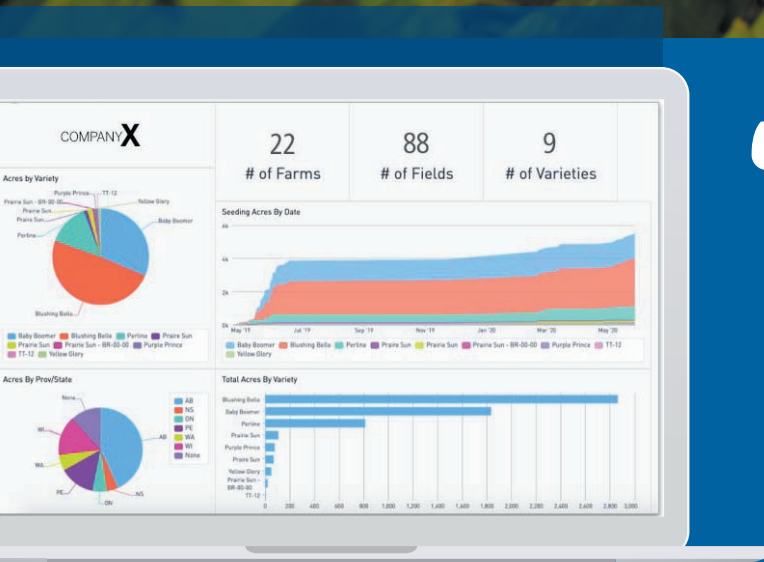
Data Warehouse

A Trimble Product

INTEGRATING SYSTEMS. ENABLING INSIGHTS.

Data Warehouse is an innovative data management tool that enables Trimble® customers to access key subsets of their data in order to independently create reports and dashboards that can be used to improve business efficiency, maximize effectiveness of automated workflows, improve crop performance, and drive labor efficiencies.

Data Warehouse puts control of data into the hands of the customer. When combined with Trimble's BI tool or other BI systems on the market today, large enterprise customers and production farm managers can quickly create unique dashboards and actionable reports to guide business success in near real time.



“

Every time I look at it I'm really **impressed**. Getting the data clean is the next challenge but until you get something like this, you don't know what you should be looking at. **It starts opening up a lot of opportunities** to use our analytics and be able to do more troubleshooting.

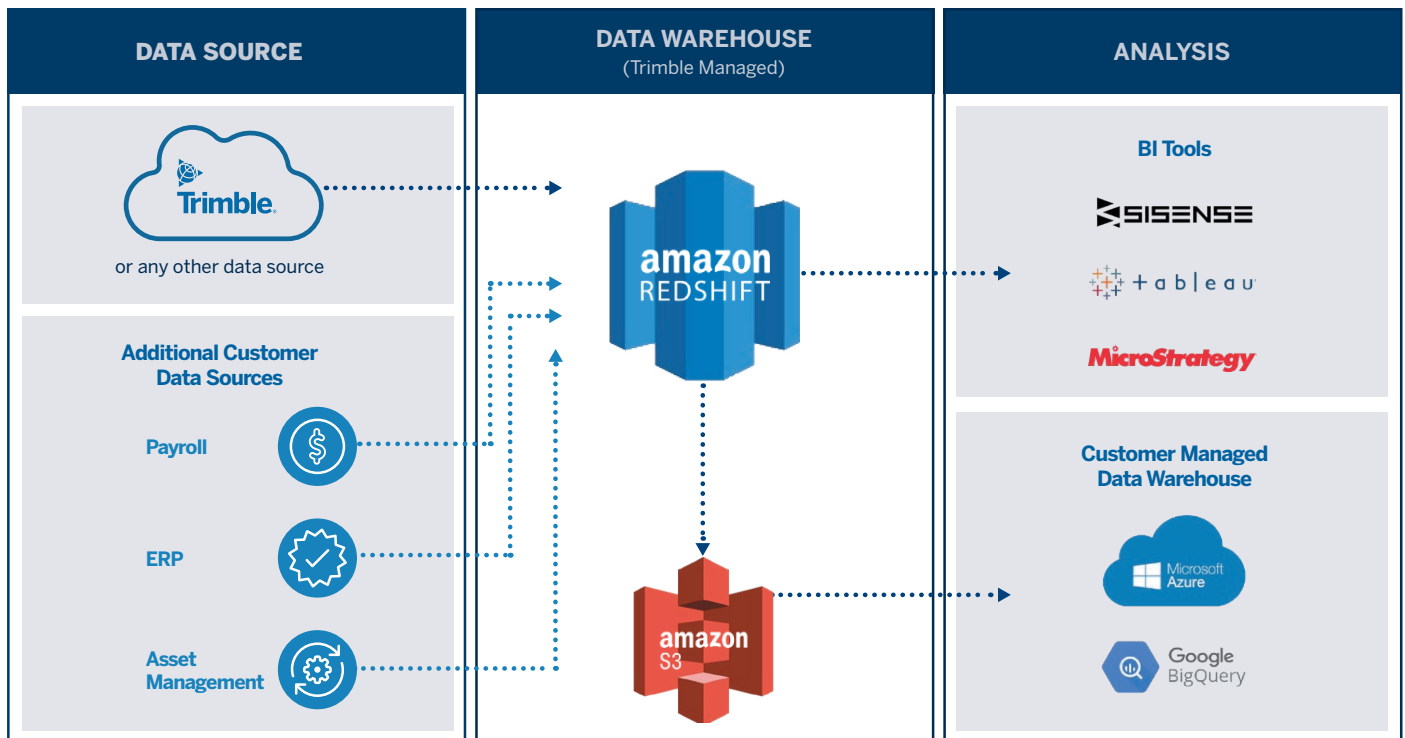
”

Key Value Proposition

Trimble's large farm and agricultural enterprise customers are demanding streamlined and timely automated data management workflows enabling them to create customized business intelligence reports that enable quick decisions that drive profitability. This requirement is increasingly becoming a must-have when evaluating hardware purchases.

Data Warehouse provides segregated access to customer data, which enables the ability to connect to BI and AI tools such as Tableau and Sisense, as well as the ability to integrate with other systems, such as ERP, payroll, and other sources. It's a turnkey solution with a fully managed data pipeline, providing faster and more streamlined access to company data than APIs.

How It Works



Key Benefits of Actionable Business Intelligence

- Turn the data into actionable insights.
- Develop 'exception' reporting to identify data errors.
- Build dashboards to visualize and monitor Key Performance Indicators (KPIs).
- Provide stakeholders with self- service functionality to drill into the data to get the answers they need.
- Once data views are established, business users can analyze the information with easy to use tools.